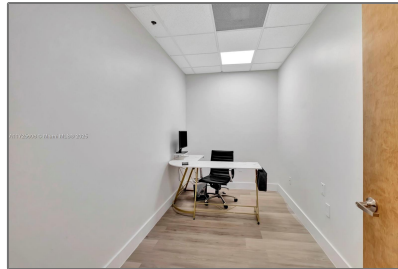


Commercial Sale

- 12550 Biscayne Blvd # 35, North Miami, Florida 33181



SKY

EXECUTIVE
OFFICE
SUITES

RENOVATED OFFICES FOR LEASE
12550 Biscayne Blvd - North Miami FL 33180
Sizes from 300 to 1,500 Sqft

Why Choose SKY?
Prime Location:
Conveniently located minutes from Aventura, Bal Harbour and Design District with easy access to major avenues and retailers.
Modern Amenities:
High-speed internet, meeting rooms, and state-of-the-art facilities.
Professional Environment:
Enhance your business image and impress your clients.
Community & Networking:
Connect with like-minded professionals and grow your network.
Flexible Lease Terms:
Adaptable agreements to suit your business needs.

Great Deals
Great Deals - Contact Us Today for Availability!
Experience fully renovated interiors in a radically approved, modern office building. Just minutes from Bal Harbour, Aventura, and the Design District, with easy access to major avenues and retailers.
Features:
• Concierge and Security Team: Front desk assistance for your convenience.
• 24/7 Building Access: Work whenever you need to.
• Flexible Lease Terms: Options to fit your business needs.
• Shared Common Spaces:

- Lobby
- Conference Room
- Kitchen/Lounge Area: Equipped with a fridge, microwave, coffee machines, water dispenser, and vending machines.

Inclusive Rent:

- Electricity
- High-Speed Internet (WiFi & Ethernet)
- Building Insurance
- Water
- Common Area Maintenance (CAM)
- Security
- Parking

CALL/TEXT LARA TORRES
305-974-1779

www.ManagementMiami.com | leasing@managementmiami.com

Basic Details

Property Type: **Commercial Sale**

Property Sub Type: **Office**

Listing Type: **For Sale**

Listing ID: **A11725608**

Price: **\$950**

Year Built: **1972**

Built up area: **110,000 Sqft**

✓ Type of Business: **Office Space, Professional**

Features

Water Front: **1**

Address Map

Country: **US**

State: **FL**

County: **Miami-Dade County**

City: **North Miami**

Zipcode: **33181**

Street: **12550 Biscayne**

Bld # 35

Street Number:	12550
----------------	--------------

Floor Number:	0
---------------	----------

Longitude:	W81° 50' 9.8"
------------	----------------------

Latitude:	N25° 53' 31.9"
-----------	-----------------------

Unit Number:	800-35
--------------	---------------

Parcel Number:	06-22-29-112-0720
----------------	--------------------------

Zoning:	6201
---------	-------------