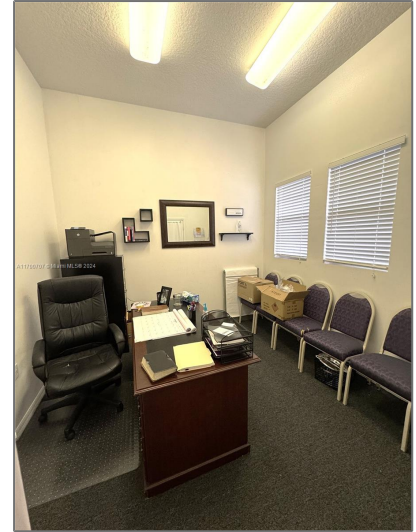
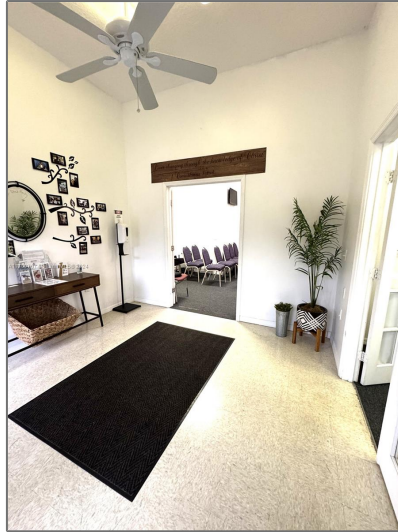


Commercial Sale

- 439 SE Port St Lucie Blvd Suite 103, Port St. Lucie, Florida 34984



Basic Details

Property Type: **Commercial Sale**

Property Sub Type: **Office**

Listing Type: **For Sale**

Listing ID: **A11700707**

Price: **\$2,750**

Year Built: **2003**

Built up area: **1,500 Sqft**

Type of Business: **Office Space, Retail Space**

Features

Water Front: **1**

Address Map

Country: **US**

State: **FL**

County: **St Lucie County**

City: **Port St. Lucie**

Zipcode: **34984**

Street: **439 SE Port St
Lucie Blvd Suite
103**

Street Number: **439**

Floor Number: **0**

Longitude: **W81° 39' 38.6"**

Latitude: **N27° 16' 23.8"**

Unit Number: **Suite 103**

Parcel Number: **3420-585-0878-000
-2**

Zoning: **Limited**

Street pre Direction: **Se**