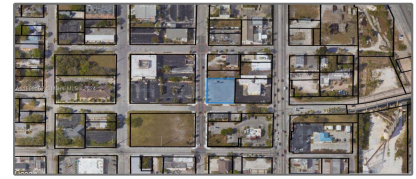


# Commercial Land

- 325 S Us Highway 1, Fort Pierce, Florida 34950



## Basic Details

Property Type:	<b>Commercial Land</b>
Listing Type:	<b>For Sale</b>
Listing ID:	<b>A11663462</b>
Price:	<b>\$525,000</b>
Lot Area:	<b>0.41 Acre</b>

## Appliances

✓ Utilities:	<b>Underground Utilities</b>
--------------	------------------------------

## Features

✓ Lot Features:	<b>City Location, Corner Location, Oversized Lot</b>
-----------------	--

✓ Sewer:	<b>Other</b>
----------	--------------

Water Front: **1**

## Address Map

Country: **US**

State: **FL**

County: **St Lucie County**

City: **Fort Pierce**

Zipcode: **34950**

Street: **325 S Us Highway 1**

Street Number: **325**

Building Name: **CARLTON'S ADDITION TO FOR**

Floor Number: **0**

Longitude: **W81° 40' 25.6"**

Latitude: **N27° 26' 40"**

Parcel Number: **2410-701-0108-000-4**

Zoning: **General Commercial**

✓ Street pre	<b>S</b>
--------------	----------

Direction:

